

LED Recessed

Ceiling flush/recessed Mounted • Wet Location Listed PROGRESS LED



Description:

The 6" P8071 is ideal for use in both new construction as well as remodel/retrofit. Light output is comparable to that of a typical 65W incandescent downlight, providing up to 75 percent energy savings. The P8071 is equipped with both Edison base adapter and quick link connector allowing easy installation in many standard incandescent recessed housings. Brushed Nickel finish.

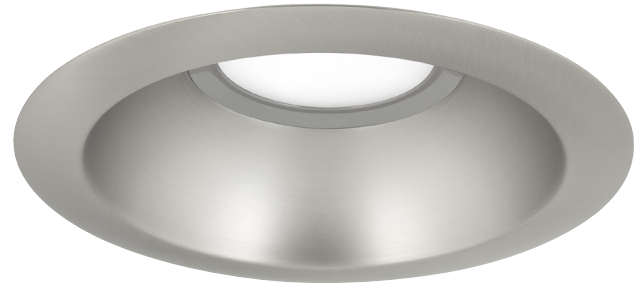
Specifications:

- White polycarbonate lens
- Brushed Nickel finish.
- Diffused polycarbonate lens controls direct glare from the LEDs.
- Easy "Push and Twist" installation with (3) friction spring clips.
- Can be installed in most competitors 6" recessed housings.
- Dimmable to 10% with many Triac/Forward Phase dimmers.
- Suitable for use in IC or NON-IC Applications.
- Provided with quick link for use with E26 Edison Base adapter.
- Meets California Title 24 - JA8 - 2016.
- 600 lumens (delivered).
- This product is not available for sale into the State of California.
- Dimmable to 10% brightness (See Dimming Notes)
- Mounting strap for outlet box included
- 6 in of wire supplied

Performance:

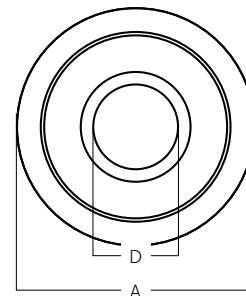
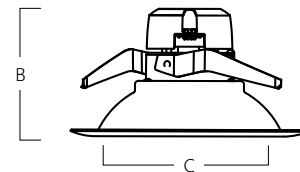
Number of Modules	10 W
Input Voltage	120 V
Input Frequency	60 Hz
Lumens/LPW (Delivered)	600/60 (LM-79)
CCT	3000 K
CRI	90 CRI
Life (hours)	50000 (L70/TM-21)
EMI/RFI	FCC Title 47, Part 15, Class B
Max. Operating Temp	30 °C
Warranty	5-year Limited Warranty
Labels	cCSAus Wet Location Listed
	ENERGY STAR® qualified
	Meets California Title 24 JA8-2016

P8071-09-30K



Dimensions:

- (A) Outside Diameter: 7.75"
- (B) Height: 4"
- (C) Inside Diameter: 6.125"
- (D) Light Emitting Surface (LES): 2.75"



P8071-09-30K

Dimming Notes:

P8071-09-30K is designed to be compatible with many Triac/Forward Phase controls.

The following is a partial list of known compatible dimmer controls.

Dimming Controls:

Lutron_Ariadni AYCL-153P

Lutron_Toggler TGCL-153P

Leviton_SureSlide 6672

Leviton_SureSlide 6674

Leviton_6681

Dimming capabilities will vary depending on the dimmer control, load, and circuit installation.

Always refer to dimmer manufacturer instructions or a controls specialist for specific requirements.

Dimmer control brand names where identified above are trade names or registered trademarks of each respective company.